



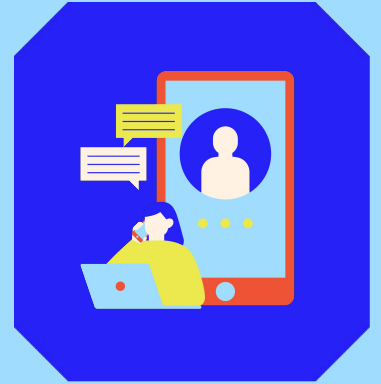
Our Digital Learning Journey

Registered charity in England and Wales. Charity no. 219099.

Our vision is a world  
where all animals are  
respected and treated  
with kindness and  
compassion.

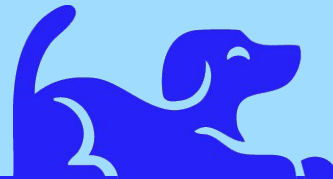


# Who we are and what we do



# 2009 - Initial challenge

To find a solution to support and train 500 staff in a software upgrade - across England and Wales



# 2010 - Launch of our new LMS - E-Learn!



**RSPCA** Home Tools Grade Usage Report Chart Admin Help Exit

**Getting Started**

- [Welcome to RSPCA E-Learn](#)
- [Browse the course catalogue](#)
- [Change my password](#)
- [View my learning record](#)

**Course Search**

**Key Courses**

- [RSPCA Introduction to Excel 2007](#)
- [RSPCA Introduction to PowerPoint 2007](#)
- [RSPCA Introduction to Word 2007](#)

**Welcome to RSPCA E-Learn**

Welcome to E-Learn, the RSPCA's Online Resource for IT Skills Training

From here you can gain access to online courses by clicking on Browse course catalogue from the Getting started window. You'll find courses suitable for all aptitude levels including the Office 2007 conversion courses. If there is a specific course you would like to take this can be searched for by using the Course Search feature.

If this is the first time you have logged into E-Learn we strongly recommend you change your password by clicking on Change my password from the Getting Started window.

To view a record of E-Learn courses you have completed or to see your progress with previously completed courses click on View my learning record from the Getting Started window.

If you require any assistance with E-Learn, then the ISSD Applications Consultancy team are available. Please email [helpdesk@rspca.org.uk](mailto:helpdesk@rspca.org.uk) with your enquiry.

**RSPCA** Action for animals **E-Learn**

**Welcome to E-Learn, the RSPCA's Online Resource for IT Skills Training**

This resource enables all RSPCA employees to obtain online IT skills training courses 24/7. In E-Learn you'll find courses suitable for all skills levels from beginner to advanced covering a range of applications including Word, Excel and PowerPoint.

In particular E-Learn has been created to support the roll out of Office 2007 and includes a range of conversion and overview courses tailored to the RSPCA.

E-Learn compliments the face to face IT skills courses run by ISSD's Applications Consultancy team, details of these course can be found on SPARC.

To login into E-Learn and access online IT skills training courses please login by entering your username and password as indicated below.

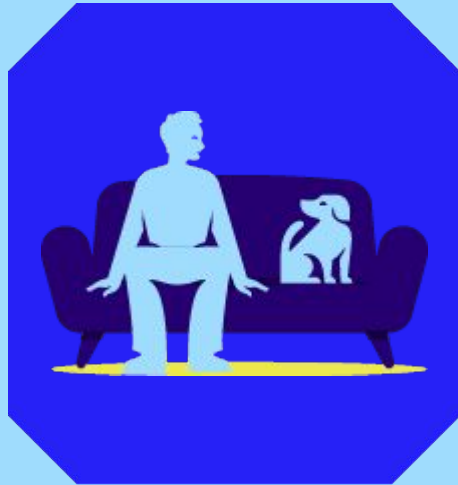
Username:  Password:

Please contact the **Applications Consultancy** team on 0300 123 0107 for further advice including help with logging in to eLearning.

# 2009 - Launch of our new LMS - E-Learn!



**126**



**13**



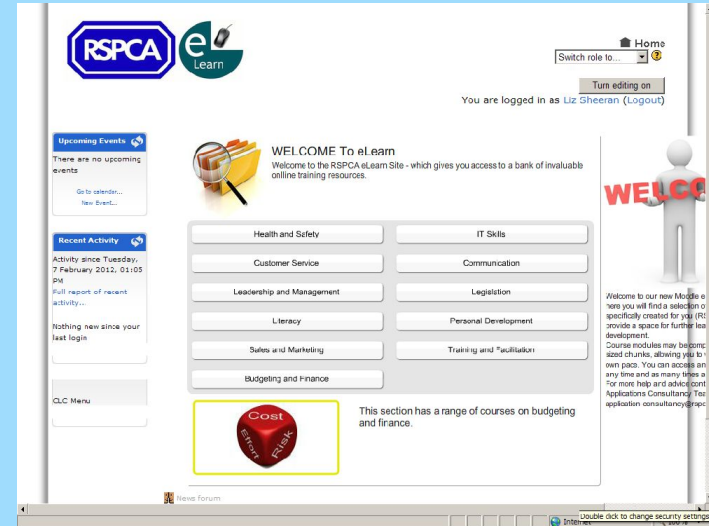
**65**



# 2011 - Move to Moodle



- Management of users
  - Added branch users
- Managing and uploading our own content
- Expanded course catalogue
- E-learn > eLearn



# 2011 - 2016 Early growth and technology

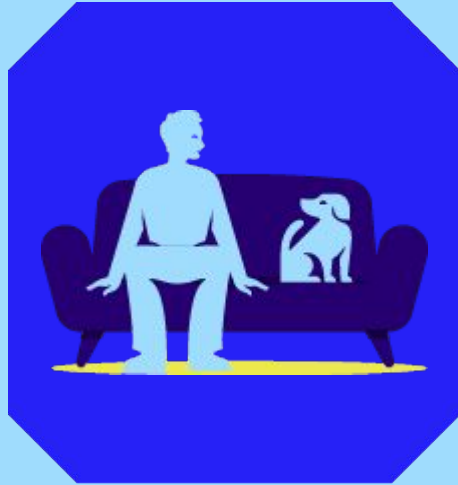
- Initial courses aimed at front line staff
- Moving to Google
- Inspectorate officers issued with smartphones and chromebooks



# 2014 - Pre RoadMap



**2,566**



**223**



**5,177**




# 2017 - RoadMap, early growth and technology

- Started again - no user data
- Rebranded and customised



# 2017 - RoadMap




Email

Password

**LOGIN**

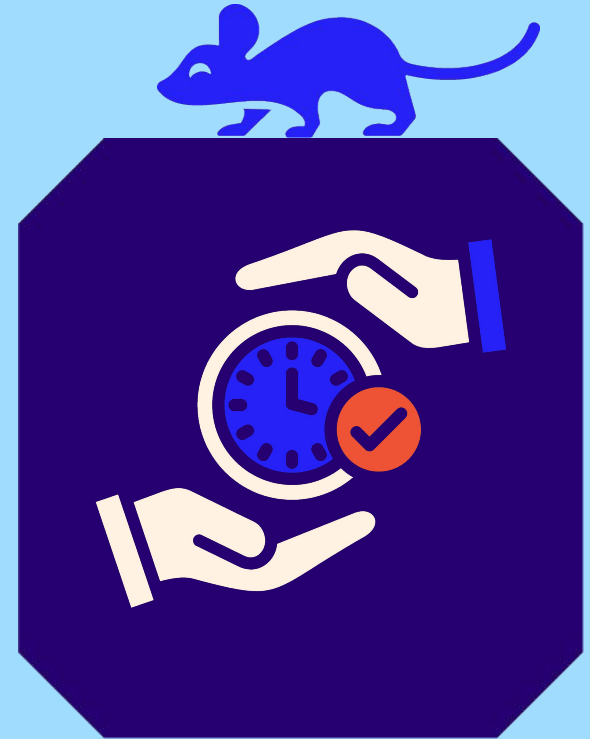
[Reset your password](#)

Need assistance? Contact [ellearn-support@rspca.org.uk](mailto:ellearn-support@rspca.org.uk)



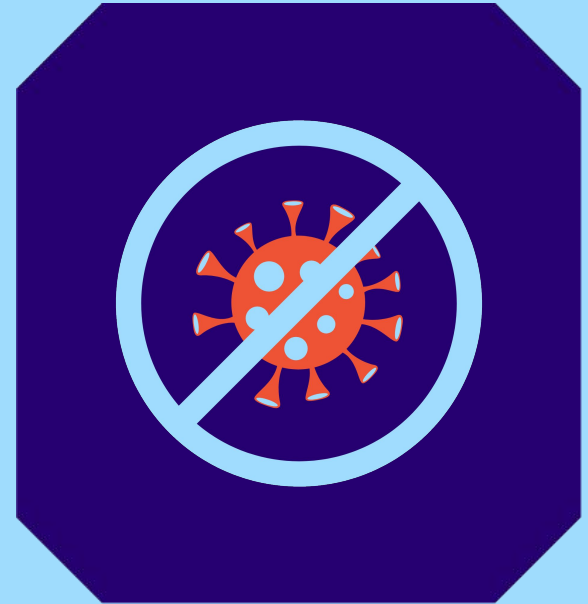
# 2017 - 2019 Automation

- Overnight sync
- F2F
- Digital Learning Advisor role created
- Volunteers
- L&D Restructured
- Clear Lessons



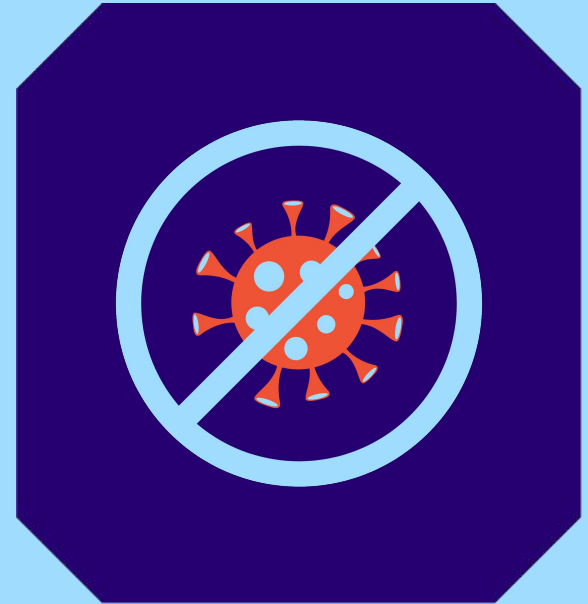
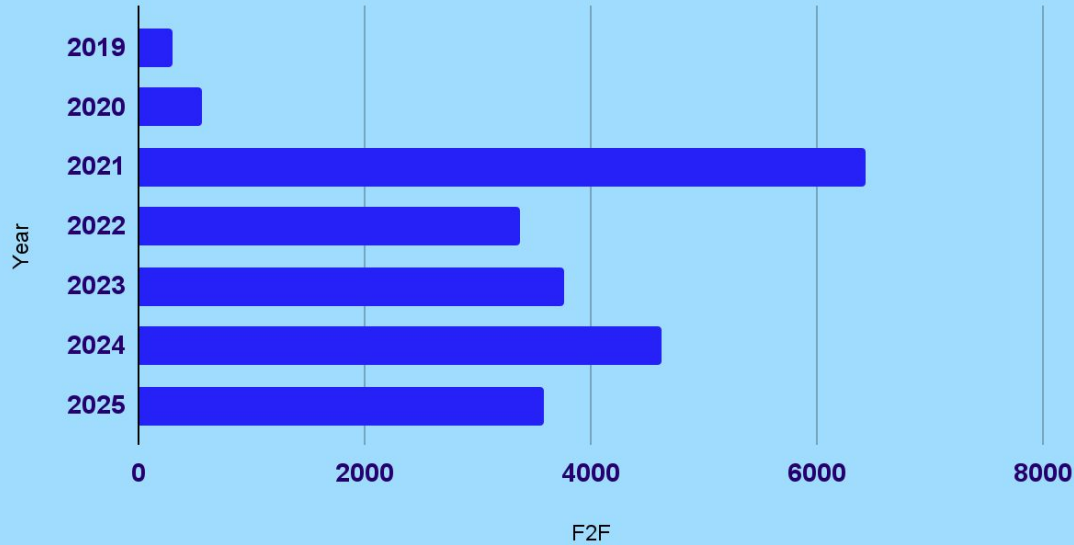
# 2020 - 2021 Covid

- Overnight shift to digital learning for everyone
- Digital Learning Advisor moved into L&D
- Rebranded and renamed the LMS
  - My Learning Hive



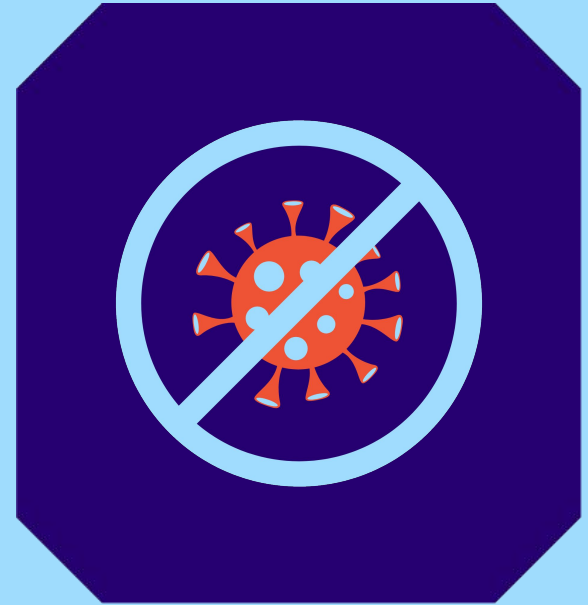
# 2020 - 2021 Covid

## Face to Face activity



# 2020 - 2021 Covid

- Started to use Learning Pathways
- Mandatory training
  - 5 courses
- Induction courses & Learning pathways



# Where we are now

- LMS firmly embedded
- Over 23,000 users
- SMEs creating own content
- Moving mandatory reporting to Team Insights



# Current status



**23,314**



**388**



**20,906**



# What have I learned?

- Don't reinvent the wheel
- Don't underestimate the power of networking
- Data and reporting
- Data integrity



# Thank you and any Questions?

